

# Register and Save!

Offer includes  
**50% off**  
your next order  
of assorted  
tips + tip  
storage case.

## Save over \$50!

Visit [Waterpik.com/WelcomeWF](https://www.waterpik.com/WelcomeWF)  
to watch How To video.

Register your product and receive over  
\$50 in savings.  
[Waterpik.com/registration](https://www.waterpik.com/registration)



## We'd Love to Hear from You!

Connect with Us  
@Waterpik



Call: 1-800-525-2774  
[www.waterpik.com](https://www.waterpik.com)

## Waterpik® 14 Day Challenge App

Make water flossing a habit! Try our new mobile App for  
the best water flossing experience.



waterpik®  
waterflosser

# Congratulations!

You are now on your way  
to better oral health!

### ✓ Register and Save

Register your product at [waterpik.com/registration](https://www.waterpik.com/registration) to receive  
over **\$50** in savings (includes **50%** off your next order of assorted  
tips + tip storage case).

### ✓ Write a Review

Creating innovative Waterpik® products that inspire better oral  
health is our passion. We invite you to leave a review by sharing your  
thoughts on the Waterpik® Ultra Plus Water Flosser on [waterpik.com](https://www.waterpik.com)  
or the retailer's website.

### ✓ We're Here to Help

We hope you are loving your new Water Flosser. If for any reason  
you are not satisfied or have any product questions, please contact  
our fast and friendly Customer Service Team based in Fort Collins,  
Colorado. Your new Water Flosser is backed by a Two Year  
manufacturer's warranty.

Call: 1-800-525-2774  
Monday-Friday  
7 am - 5 pm MST



Chat or E-mail  
[service@waterpik.com](mailto:service@waterpik.com)



**Quick Start  
Guide Inside!**

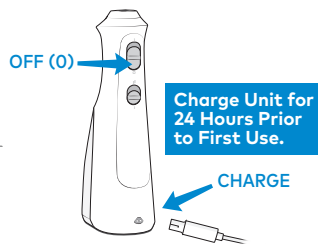


# Quick Start Guide

## GETTING STARTED

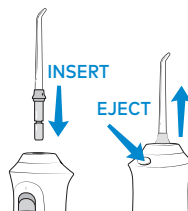
- 1 With the unit turned OFF(0), connect the charging cord to user supplied \*\*USB charger. Plug the charger into the wall outlet, then connect the other end of the charging cord to the unit, and charge.

\*\*USB charger requirements: USB Type-A, Rated Output: 5.0 VDC, 1.0 A

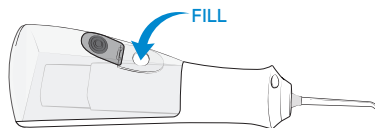


- 2 Press tip firmly into unit until it clicks into place. To remove tip, push the tip eject button.

**Caution:**  
Do not press tip eject button while unit is running.



- 3 Unplug charging cord from unit prior to filling with water and during use. Lift the flip top on reservoir and fill with lukewarm water. Refill as needed.



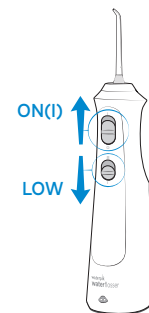
## NEED HELP?

Visit [Waterpik.com/WelcomeWF](https://www.waterpik.com/WelcomeWF)  
To watch a How To Video and find additional product support.

Call Us! **1-800-525-2774 (USA)**  
**1-888-226-3042 (CAN)**

## WATER FLOSS

- 4 For first time use, adjust the pressure setting to the LOW(I) setting.

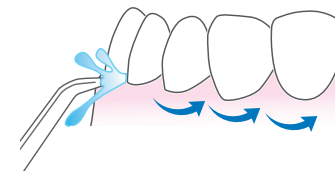


- 5 Lean over sink and close lips enough to prevent splashing while still allowing water to flow from mouth into the sink. Turn unit ON(I).



 Keep unit upright during use to ensure continuous water flow.

- 6 Aim water at the gumline at a 90 degree angle. Follow the gumline and pause briefly between teeth.



**TO AVOID MESS: KEEP TIP IN MOUTH WHILE UNIT IS ON.**